

LAKERIDGE GREENS

AT PIPER'S GLEN PUD - POD 'D'

SITUATE IN SECTIONS 3 & 4, TOWNSHIP 46 SOUTH, RANGE 42 EAST, PALM BEACH COUNTY, FLORIDA,
 A PORTION OF WHICH IS PART OF BLOCK 64 OF PALM BEACH FARMS COMPANY PLAT NO. 3,
 AS RECORDED IN PLAT BOOK 2, ON PAGES 45 THROUGH 54, INCLUSIVE OF THE PUBLIC RECORDS
 OF SAID PALM BEACH COUNTY.

FEBRUARY, 1995

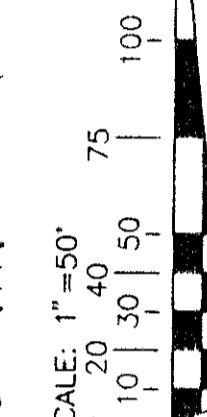
SHEET 5 OF 10

0298-015

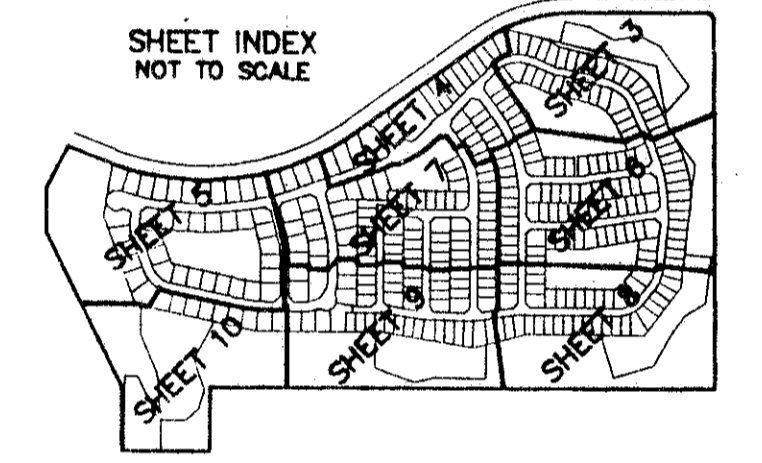
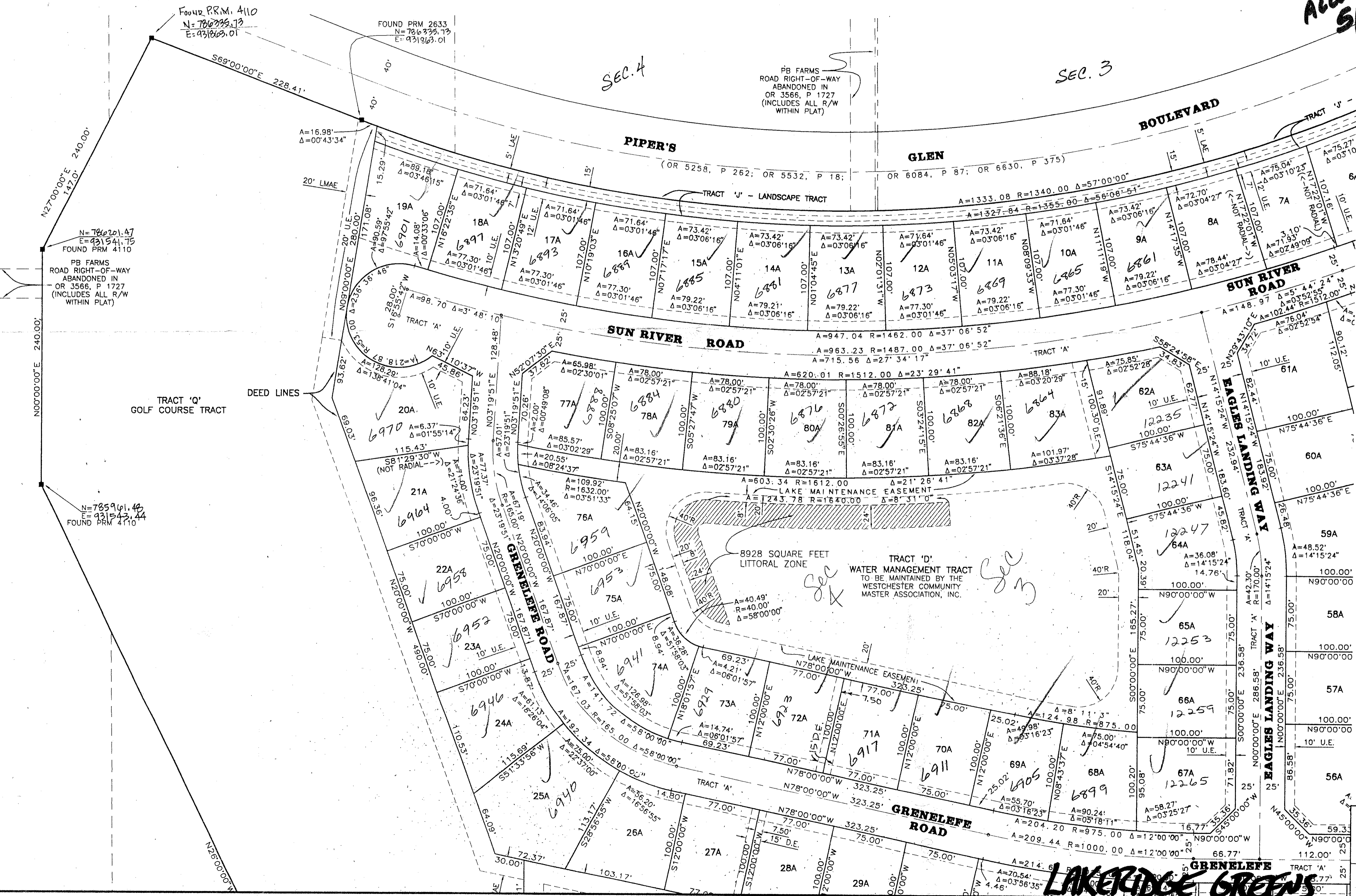
182

**Pgt. 80-212D
 Alloc. #0002
 S/B/S/K**

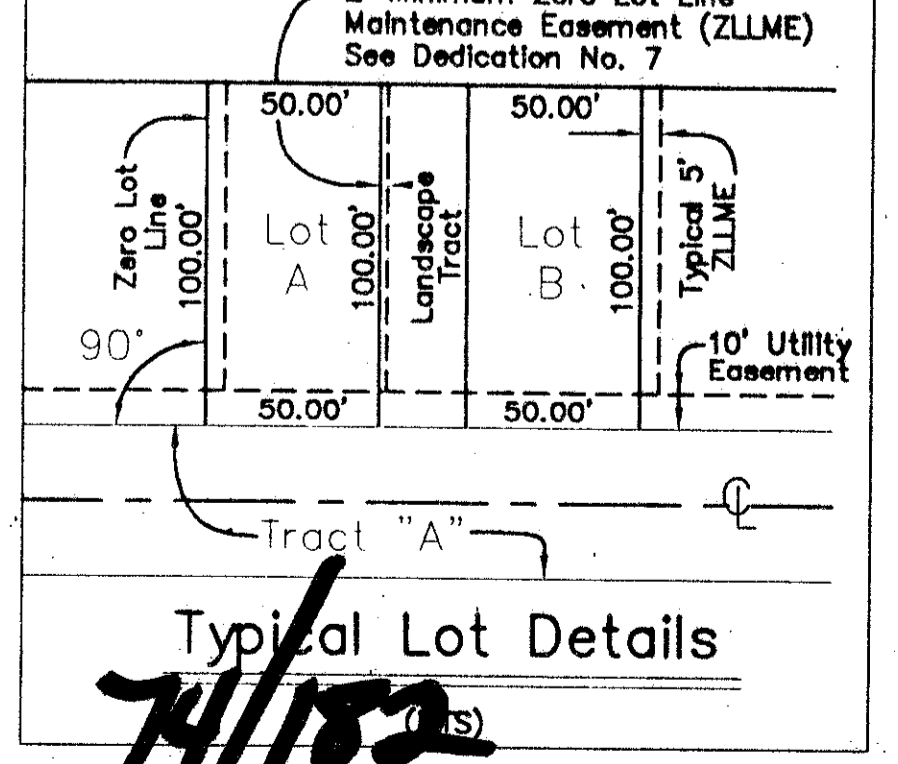
STATE OF FLORIDA
 COUNTY OF PALM BEACH } SS
 This plat filed for record on _____
 this _____ day of _____
 19____ and duly recorded in Plat
 Book _____ on page _____
 DOROTHY H. WILKEN, CLERK of the
 Circuit Court.
 By: _____ D.C.



All distances are ground.
 Scale factor = 1.000285.
 Ground distance X scale factor = Grid Distance.
 See sheet 3 for complete coordinate information.



- Map Legend :**
- ⊙ = Permanent Control Point
 - ⊕ = Permanent Reference Monument
 - ⊙ = Centerline
 - Δ = Central Angle (Delta)
 - CM = Concrete Monument
 - DE = Drainage Easement
 - DT = Driveway Tract
 - FL = Feet
 - L = Arc Length
 - LAE = Limited Access Easement
 - LME = Lake Maintenance Easement
 - LMAE = Lake Maintenance Access Easement
 - ORB = Official Record Book
 - PB = Plat Book
 - PC = Point of Curvature
 - PCP = Permanent Reference Point
 - Pg = Page
 - Pg = Permanent Reference Monument
 - R = Radius Length
 - Typ = Typical
 - UE = Utility Easement
 - ZLLME = Zero Lot Line Maintenance Easement



Atlantic - Caribbean Mapping, Inc.
 PROFESSIONAL LAND SURVEYORS AND MAPPERS
 357 Liana Drive
 West Palm Beach, Florida 33415
 (407) 687-5898 - Fax (407) 471-8752

Project No. 94085 Dwg No. 94085PL SHEET 5 OF 10

SUBDIVISION * Lakeridge Greens
 BOOK 74 PAGE 182
 FLOOD MAP # 200A
 FLOOD ZONE
 ZONING RT
 QUAD # 36151
 SE 80-212
 ZIP CODE 33437
 PUD NAME Pipers Glen P.U.D.
 0298-015

TAZ-457

LAKERIDGE GREENS

0298-015